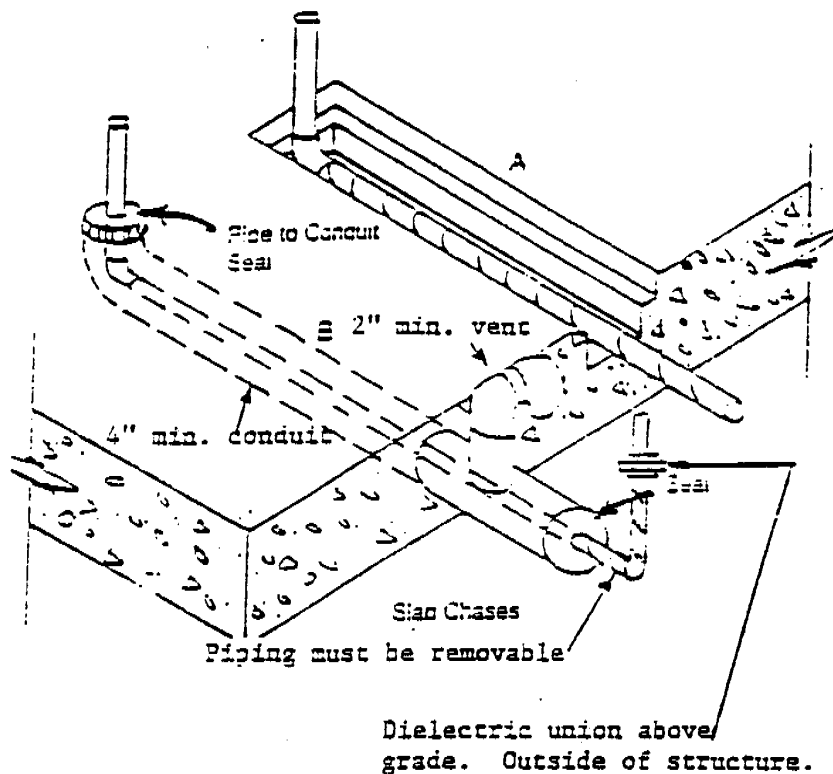


GAS Piping



- A. Provide channel or recess in slab. Use removable cover plate.
- B. Pipe in conduit sealed at floor line with vent outside at least 6" above grade.
- C. Prior approval is required.
- D. An inspection is required before the slab is poured.
- E. All pipe must be removable.
- F. Coated pipe must be used to a point at least 6" above grade. All joints must be primed and taped.
- G. Underground ferrous gas piping shall be electrically isolated from the rest of the gas system with listed or approved isolation fittings installed a minimum of six (6) inches above grade.
- H. Vent pipe conduit may be installed in wall providing it vents to outside atmosphere separately.

pm96p"